



WORLD NO. 1 IN HYDRAULIC
ELEVATOR TECHNOLOGY

More than **830,000 lifts** worldwide
with **GMV technology**



HOME LIFTY MRL

MAIN HOME LIFTY ADVANTAGES

> COMFORT

The only Home Lift in the market with an MRL solution (Machine Room Less) with NGV electronic valve and with Bio-degradable eco-fluid.

Available with adjustable speeds.

Max. speed up to 0,3 m/s (optional)

Caution: Speed > 0,15 m/s only possible outside the European Union

> ACCESSIBILITY

It eliminates architectural restrictions.

> SAFETY AND FULLY COMPLIANT WITH THE STANDARDS

It meets EN 81.70 standards (accessibility).

Incorporated automatic return to floor.

> AVAILABLE MOTORS AND VOLTAGES

Single-phase and three-phase

> SELF-SUPPORTING STRUCTURES (optional)

Easy to install.

> SHAFT

Optimal use of shaft space

> HIGH ENERGY EFFICIENCY

Low Energy consumption (in compliance with Kyoto Protocol). The energy used is like that of a 230 V standard household appliance.

> ENVIRONMENTLY FRIENDLY

It can be used with bio-degradable eco-fluid.

> FLEXIBILITY

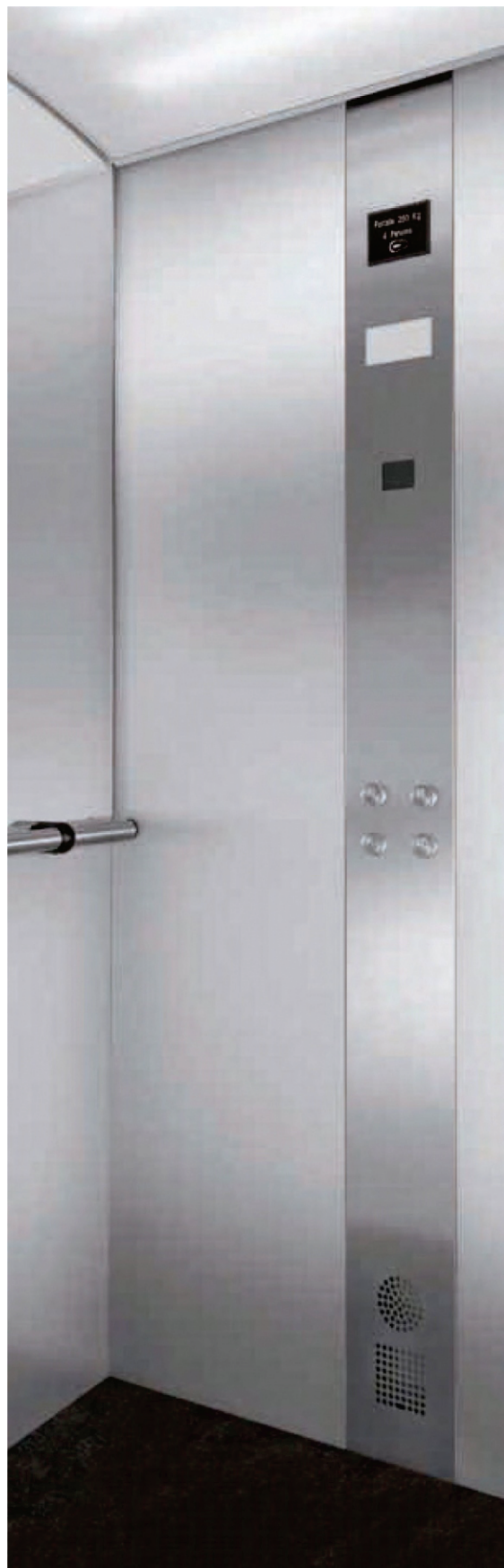
- It can be 100% customized.
- Adaptable to each customers requirement
 - Wide range of doors available: power-operated, hinged semi-automatic, manual landing doors with the same finishes as the apartment doors, etc.
 - Wide range of aesthetic finishes



HOME LIFTY FEATURES

TECHNICAL FEATURES

Suspension	2:1
Payload	180 Kg ÷ 400 Kg
Max. n° of passengers	5
Max. number of stops	8
Max. travel	14 m
Max. speed	0,15 m/s *
Motor power	1,5 - 2,6 kW
Min. pit	150 mm
Min. headroom	2500 mm ÷ 2700 mm
Lift car (standard sizes)	(width) 800: 1200 mm; (depth) 800: 1400 mm
Cabinet (optional)	E type, Easy 400 type or HL compact power unit with controller cabinet (dimensions: 350 mm x 260 mm x 2000 mm - length x width x height)
Energy efficiency	The used energy is like that of the most common household appliances
Fluid	 Eco-fluid (optional)
Standard	Machine Directive 2006/42/EC, EN 81.41 (safety), EN 81.70 (accessibility)



* Speed up to 0,3 m/s, without certificate and only outside the European Market

STANDARD EQUIPMENT

> HYDRAULIC POWER UNIT

- Power unit HL or HLV with mechanical valve or, as an option, with NGV electronic valve, that provides higher safety and energy efficiency
- Reduced consumption thanks to its outer motors (DRY).
- Double safety system incorporated as standard.
- Leveling and electrical emergency system.
- One stage jack (1008 SL piston).
- Hydraulic equipment calculated according EN 81-20 standard.
- Flexible hose.
- Travel comfort: programming upwards speed independent from the down speed.

> MECHANICAL EQUIPMENT

- Car frame 2:1 (T509 model).
- Instantaneous safety devices to increase safety.
- Deviation pulley and traction cables.
- Pillars and stand base.
- Mechanical device to perform the trial test for the rupture valve.
- Guide rail type T82, 5000 mm long

> ELECTRICAL EQUIPMENT

- Automatic push-button or constant pressure controller
- EMC certificate
- Pre-wired cables (plug in play). Automatic return to floor.
- Single-phase motor 50/60 Hz. Car light timer.

> LANDING DOORS

- Hinged semi-automatic doors.
- Certified door locks.



STANDARD

EQUIPMENT IN COMPLIANCE WITH EN.81.41 (safety)

- Pressure switch
- Interphone or intercom inside the car
- Hand pump
- Hold-to-run operation
- Handrail
- Light curtain as per EN.81.41
- Specific information labels as per EN.81.41
- Safety device for reduced pit
- Door clear width: 800 mm
- Lift car sizes as per EN.81.41
- Set of electrical switches

EQUIPMENT IN COMPLIANCE WITH EN.81.70 (accessibility)

- Door clear width minimum of 800 mm
- Horizontally sliding car and landing power operated doors
- Minimum car size: 1000 x 1250 mm
- Side handrail
- Half wall mirror
- Precise floor leveling +/- 10 mm
- Push button boxes as per EN.81.70
- Vocal indicator at floor arrival, acoustic and visual indicators

* Possibility of extending the warranty up to 10 years. For further information please call the phone number overleaf




Home Lifty

SAFETY

> Safety devices:

- Instantaneous safety device to increase safety
- Pipe bursting valve with CE certificate
- Device for reduced pit for the maintenance phase.
- Visual and acoustic overload indicator
- Light curtain at each entrance

> Electrical equipment:

- Push button box at every floor
- Emergency stop push button
- Alarm push button
- Emergency light

QUALITY

> List of the available certificates:

- EMC certificate for the controller and the NGV electronic valve block
- Certificate for fire-rated landing doors
- EC certificate for: pipe bursting valve, landing door locks and Safety devices in the car frame

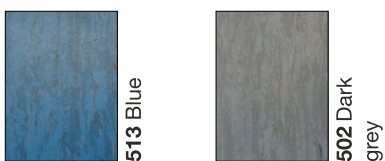
> Standards:

- Machine Directive 2006/42/EC
- EN.81.41 and EN.81.70 (optional)
- EN.81.58

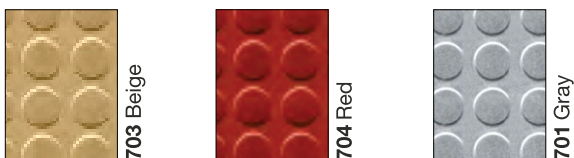


FINISHES, COLOURS, MATERIALS FLOORS & CEILINGS

FLOORS - PVC



FLOORS – PVC (anti slip floor)



The Lift car floor can be prepared with 20 mm undercut to allow the customer to fit their own lining.

GMV offers two different types of lighting available with any car dimension:

NEON Ceilings



Curved plexiglass (standard)

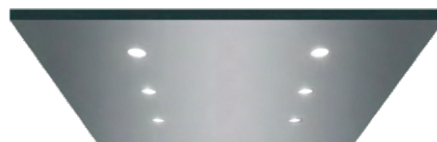


Domino*




Bubbles*

LED Ceilings



Led*

 301 SB stainless steel

* The finishes of all models are in stainless steel.

FINISHES, COLOURS, MATERIALS WALLS

PLASTIC LAMINATE



114 White
light blue



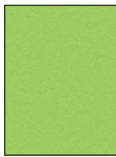
115 Stone
grey



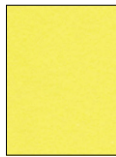
116 Carob



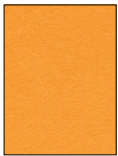
117 Lavender



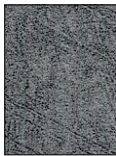
118 Green



119 Yellow



120 Orange



121 Copperfield



123 Brushed
silver

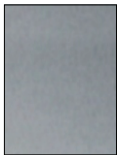


125 Manganite



126 Durmast

STAINLESS STEEL



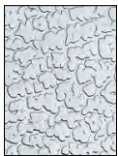
301 SB
stainless steel



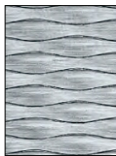
302 Stainless
steel chequers



303 Stainless
steel linen

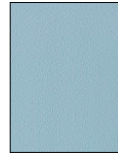


304 Stainless
steel leather



305 5WL

SKINPLATE



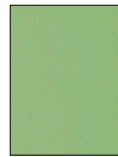
416 Light blue



417 Dark blue



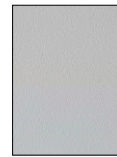
422 Pink
marble



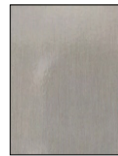
418 Dark
green



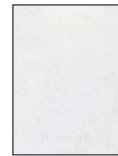
413 Dark
grey



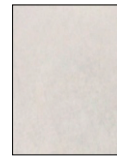
412 Light
grey



414 Satin



420 Glossy
white marble



421 Glossy
beige marble



419 Red



409 Fir



410 Mahogany

GLASS



801 Glass

FINISHES, COLOURS, MATERIALS DOORS

DOOR TYPES



2AT Telescopic doors



3AT Telescopic doors



2AO central opening doors



Hinged doors – on floors



Bus doors – into the car



2AT Glass door

CAR AND LANDING DOORS*

PLASTIC LAMINATE	Please contact GMV sales office
SKINPLATE	Telescopic / central opening doors only
STAINLESS STEEL	All types available
GLASS	Available finish
RAL	Hinged doors

* Finishes like car walls (see page 9)

POLIMOD (automatic doors only)



201 Beige



204 Light grey



205 Dark grey

CAR AND DOORS OPTIONS

NOTE: For other options please call the GMV sales office



Ceiling: curved plexiglass and Neon lighting



Half wall mirror



Full wall mirror



Stainless steel handrail



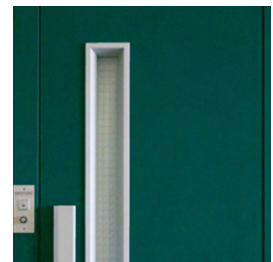
Display in landing and car push button boxes



Car doors: telescopic / central opening doors 2AT/2AO/3AT



Car doors: Power operated bus doors



Landing doors with any RAL finish



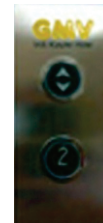
Telephone (arrangement only)



Intercom



Ceiling: stainless steel and Led lighting



Customized logo



Key in car

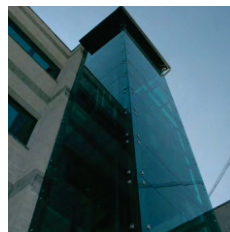
ADDITIONAL OPTIONS



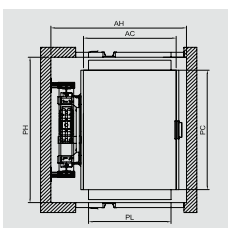
NGV programming tool



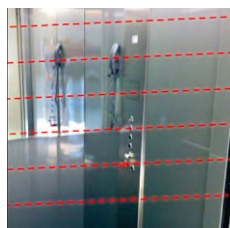
Eco-fluid



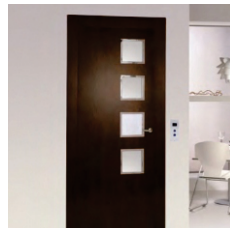
Self-supporting structures for indoor and outdoor



2 entrances



Light curtain



Use the finishes of your house doors for your Home Lifty door

OTHER ADDITIONAL OPTIONS

- Door clear width different from the standard
- Door clear height different from the standard (2000 mm)
- Guide rails 2500 mm long
- Automatic system for hinged doors
- Remote control

HOME LIFTY MRL-MC VERSION

Structure

GMV can provide steel structures for indoor or outdoor use, with any possible finish (steel or glass), perfectly matching any new or existing building type. The technical structure specifications are calculated depending on each installation, in compliance with any national standard or regulation.

Landing doors

Door models available: power operated doors 2AT-2AO-3AT, hinged doors (Car bus door and manual at landings), Manual doors (without car door). Available finishes: Polimod, Plastic laminate, Plastic coated sheet steel (Skinplate), Stainless Steel, Panoramic glass or RAL painted. Quick and easy to assemble and adjust.

1008 SL piston

Maximum shaft optimization. Less fluid quantity used. Quick and easy to install thanks to its design.

Car

Designed to fit into any furnishing type. Car wall panels available in Skinplate, Plastic Laminate or Stainless Steel. Several ornamental solutions are possible. Very robust floor and roof. Car lighting available with led or fluorescent neon tubes. Easy access to the shaft through a hatch in the car roof.

Flexible hose

Designed with inner synthetic rubber coat, with one or two high resistance spirals. The outer layer of synthetic rubber provides excellent resistance.

Eco-fluid

It guarantees the best results and very high performance over the years. It betters the performance of the NGV valve. Best filtration with or without water. Excellent anti-corrosion, anti-oxidant and anti-foam results. Very low freezing point.

Car frame T509

Traction 2:1. Designed for any kind of building thanks to the reduced pit (150 mm). Ideal to transport passengers in single family installations. It is supplied with a low pit safety device according to EN 81.41.

Car doors

Available door types: Power operated (2AT- 2AO - 3AT). Semiautomatic (bus door in car and manual landing door). Without car door (with light curtain technology)

Control panel

Easy to install, setting at work and maintenance with LED signal inputs and output indicators-LCD display. Robust push-buttons. Diagnostic tool provided for installation, parameter settings, repair and, maintenance, allowing to find code errors.

Furthermore it supplies:

- Automatic re-leveling
- Emergency lowering device to main floor in case of black-out
- Automatic push-button or constant pressure controller
- Car light timer

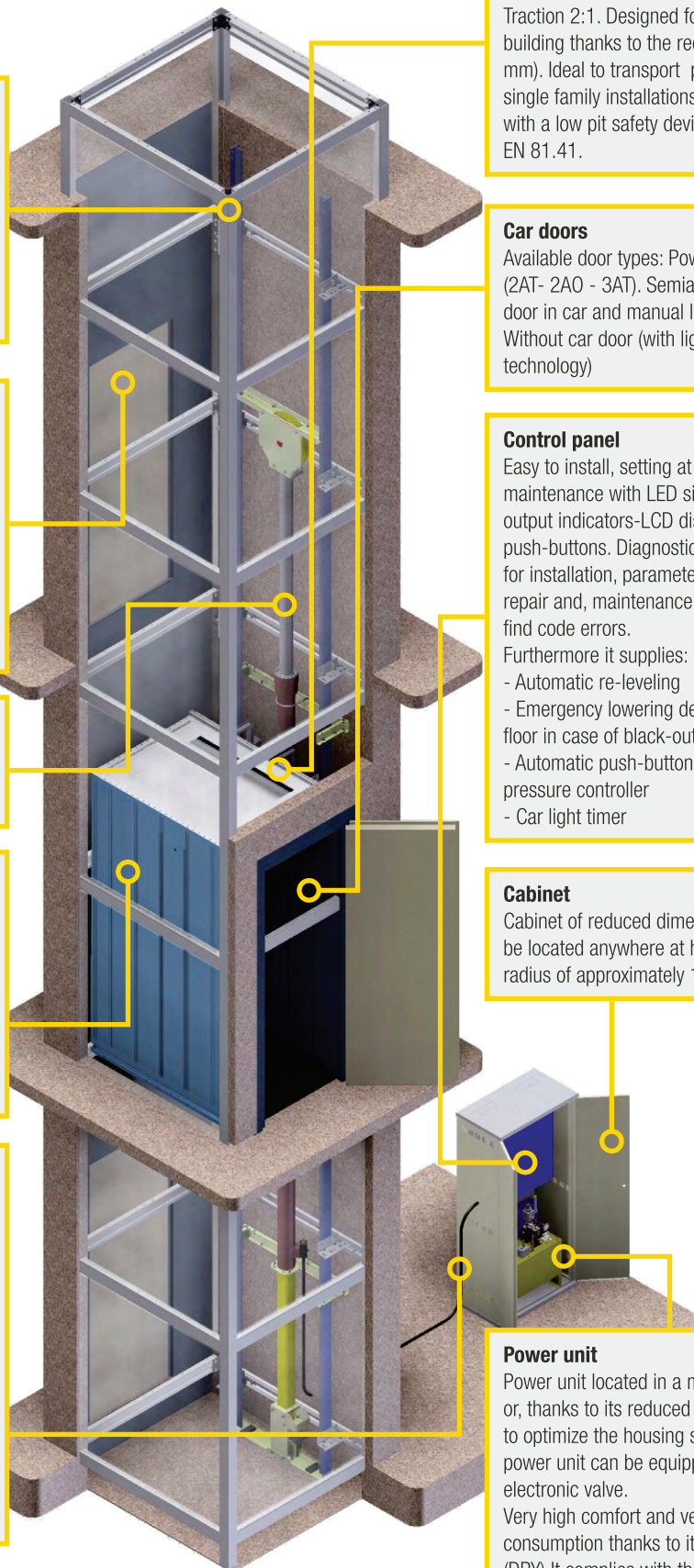
Cabinet

Cabinet of reduced dimensions that can be located anywhere at home within a radius of approximately 15 m.

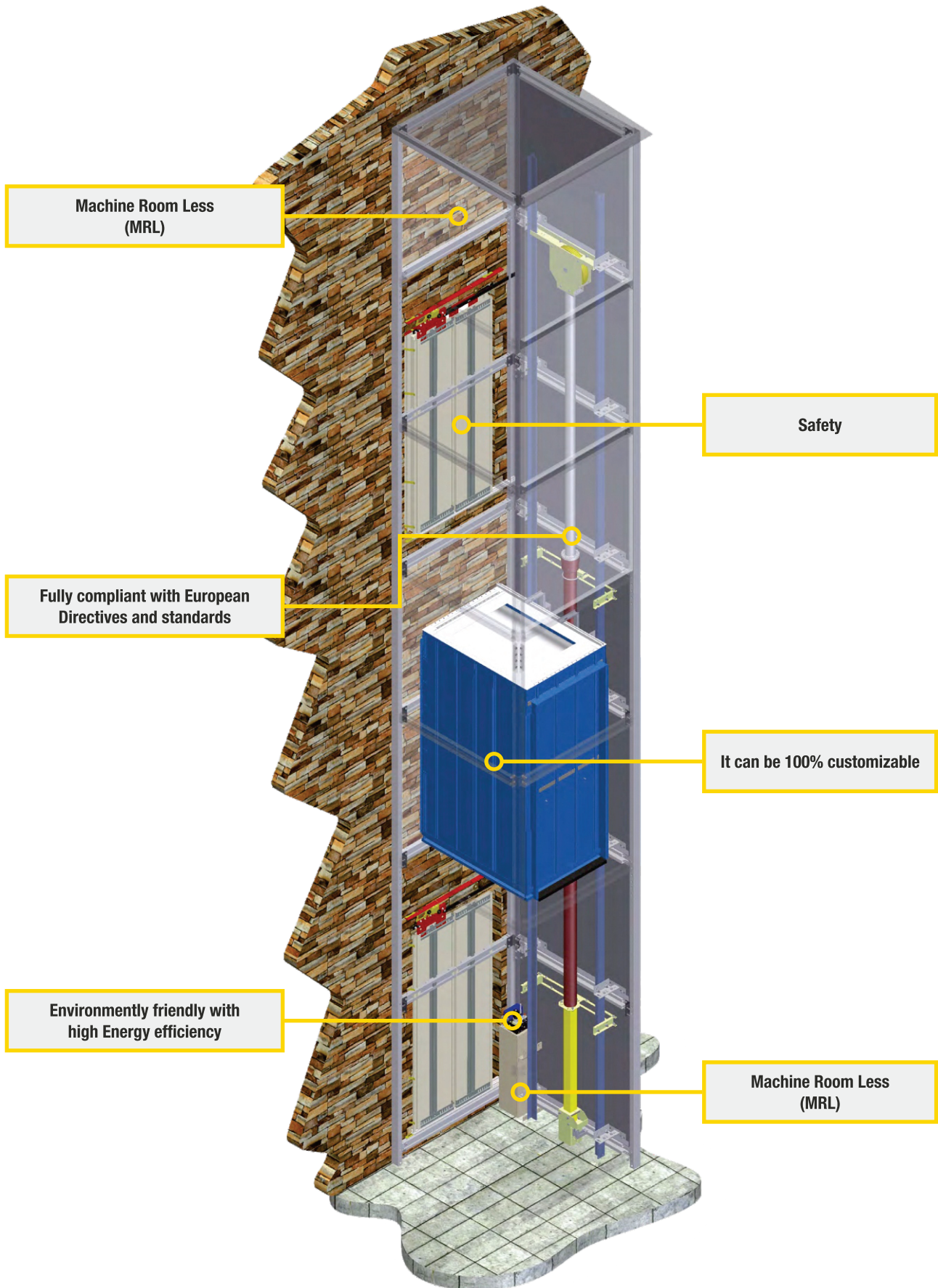
Power unit

Power unit located in a machine room or, thanks to its reduced size, anywhere to optimize the housing space. The power unit can be equipped with NGV electronic valve.

Very high comfort and very low consumption thanks to its outer motor (DRY).It complies with the Machine Directive 2006/42/EC.



HOME LIFTY MRL VERSION



HOME LIFTY Car and shaft sizes with one car entrance						MRL-MC (with power unit outside the shaft)			MRL (with power unit inside the shaft)		
						Telescopic doors	Swing doors with folding doors	Swing doors without folding doors	Telescopic doors	Swing doors with folding doors	Swing doors without folding doors
Payload	Pers		CV	CD	CDO	SWxSD	SWxSD	SWxSD	SWxSD	SWxSD	SWxSD
180 kg	2	-	800	800	700	1250x1550	1250x1050	1250x1050	1300x1350	1300x1100	1300x1100
250 kg	3	-	800	1000	700	1250x1350	1250x1250	1250x1250	1300x1550	1300x1300	1300x1300
			800	1200	750	1350x1550	1300x1400	1300x1450	1300x1550	1350x1400	1350x1450
			800	1250	750	1350x1600	1300x1450	1300x1500	1350x1600	1350x1450	1350x1500
		-	850	1000	750	1350x1350	1300x1250	1300x1250	1350x1550	1350x1300	1350x1300
		-	900	1000	800	1400x1350	1350x1250	1350x1250	1450x1550	1400x1300	1400x1300
		-	900	1100	800	1400x1450	1350x1350	1350x1350	1450x1550	1400x1350	1400x1350
		-	1000	1000	800	1450x1350	1450x1250	1450x1250	1450x1550	1500x1300	1500x1300
320 kg	4		800	1300	750	1350x1650	1300x1500	1300x1450	1350x1650	1350x1500	1350x1550
			900	1200	800	1400x1550	1350x1450	1350x1450	1450x1550	1400x1450	1400x1450
			900	1250	800	1400x1600	1350x1500	1350x1500	1450x1600	1400x1500	1400x1500
			900	1400	800	1400x1750	1450x1650	1450x1650	1450x1750	1400x1650	1400x1650
			1000	1250	800	1450x1600	1450x1500	1450x1500	1450x1600	1500x1500	1500x1500
400 kg	5		1100	1250	800/900	1550/1600x1600	1550x1500	1550x1500	1600x1600	1600x1500	1600x1500
			1100	1300	800/900	1550/1600x1650	1550x1550	1550x1550	1600x1650	1600x1550	1600x1550
			1100	1400	800/900	1550/1600x1750	1550x1650	1550x1650	1600x1750	1600x1650	1600x1650
			1200	1250	800/900	1650x1600	1650x1500	1650x1500	1700x1600	1700x1500	1700x1500

HOME LIFTY Car and shaft sizes with two opposite entrances						MRL-MC (with power unit outside the shaft)			MRL (with power unit inside the shaft)		
						Telescopic doors	Swing doors with folding doors	Swing doors without folding doors	Telescopic doors	Swing doors with folding doors	Swing doors without folding doors
Payload	Pers		CW	CD	CDO	SWxSD	SWxSD	SWxSD	SWxSD	SWxSD	SWxSD
180 kg	2	-	800	800	700	1250x1340	1250x1140	1250x1120	-	1300x1140	1300x1120
250 kg	3	-	800	1000	700	1250x1540	1250x1340	1250x1320	-	1300x1340	1300x1320
			800	1200	750	1350x1740	1300x1460	1300x1520	-	1350x1460	1350x1520
			800	1250	750	1350x1790	1300x1510	1300x1570	1350x1790	1350x1510	1350x1570
		-	850	1000	750	1350x1540	1300x1340	1300x1320	-	1350x1340	1350x1320
		-	900	1000	800	1400x1540	1350x1340	1350x1320	-	1400x1340	1400x1320
		-	900	1100	800	1400x1640	1350x1440	1350x1320	-	1400x1440	1400x1420
		-	1000	1000	800	1450x1540	1450x1340	1450x1320	-	1500x1340	1500x1320
320 kg	4		800	1300	750	1350x1840	1300x1560	1300x1620	1350x1840	1350x1560	1350x1620
			900	1200	800	1400x1740	1350x1540	1350x1520	-	1400x1540	1400x1520
			900	1250	800	1400x1790	1350x1590	1350x1570	1450x1790	1400x1590	1400x1570
			900	1400	800	1400x1940	1350x1740	1350x1720	1450x1940	1400x1740	1400x1720
			1000	1250	800	1450x1790	1450x1590	1450x1570	1450x1790	1500x1590	1500x1570
400 kg	5		1100	1250	800/900	1550/1600x1790	1550x1610	1550x1570	1600x1790	1600x1590	1600x1570
			1100	1300	800/900	1550/1600x1840	1550x1640	1550x1620	1600x1840	1600x1640	1600x1620
			1100	1400	800/900	1550/1600x1940	1550x1740	1550x1720	1600x1940	1600x1740	1600x1720
			1200	1250	800/900	1650x1790	1650x1590	1650x1570	1700x1790	1700x1590	1700x1570

HOME LIFTY

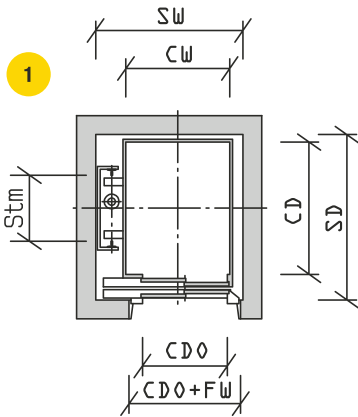
Car and shaft sizes with two adjacent entrances

3

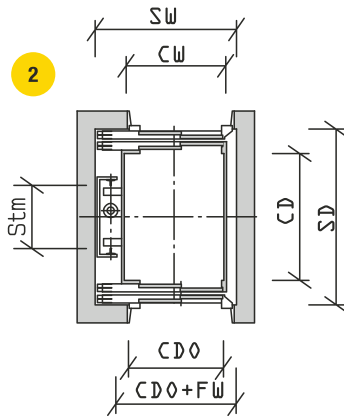
MRL-MC (with power unit outside the shaft)

MRL (with power unit inside the shaft)

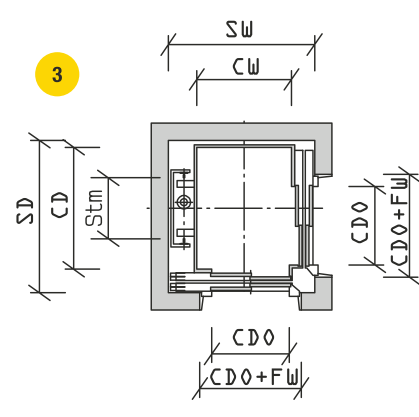
Payload	Pers	Icon	CW	CD	CDO	MRL-MC (with power unit outside the shaft)			MRL (with power unit inside the shaft)		
						Telescopic doors	Swing doors with folding doors	Swing doors without folding doors	Telescopic doors	Swing doors with folding doors	Swing doors without folding doors
180 kg	2	-	800	800	700	-	-	1300x1100	1450x1450	-	1350x1100
250 kg	3	-	800	1000	700	1450x1450	1350x1300	1300x1250	1450x1600	1350x1300	1350x1300
		Icon	800	1200	750	1500x1550	1350x1450	1300x1450	-	1400x1450	1400x1450
		Icon	800	1250	750	1500x1600	1350x1500	1300x1500	1500x1600	1400x1500	1400x1500
		-	850	1000	750	1550x1550	1400x1300	1350x1250	1550x1550	1400x1300	1400x1300
		-	900	1000	800	-	1450x1350	1400x1250	-	1450x1300	1450x1300
		-	900	1100	800	-	1450x1400	1400x1350	-	1450x1350	1450x1350
		-	1000	1000	800	-	1550x1350	1500x1250	1650x1600	1550x1300	1550x1300
320 kg	4	Icon	800	1300	750	1500x1650	1350x1550	1300x1550	1500x1650	1400x1550	1400x1550
		Icon	900	1200	800	-	1450x1500	1400x1450	-	1450x1450	1450x1450
		Icon	900	1250	800	1600x1600	1450x1550	1400x1500	1600x1600	1450x1500	1450x1500
		Icon	900	1400	800	1600x1750	1450x1700	1400x1650	1600x1750	1450x1650	1450x1650
		Icon	1000	1250	800	1650x1600	1550x1550	1500x1500	1650x1650	1550x1500	1550x1500
400 kg	5	Icon	1100	1250	800/900	1750x1600	1650x1550	1600x1500	1750x1650	1650x1500	1650x1500
		Icon	1100	1300	800/900	1750x1650	1650x1600	1600x1550	1750x1700	1650x1550	1650x1550
		Icon	1100	1400	800/900	1750x1750	1650x1700	1600x1650	1750x1750	1650x1650	1650x1650
		-	1200	1250	800/900	1850x1600/1750	1750x1550	1700x1500	1850x1600/1750	1750x1500	1750x1500



Car and shaft sizes with one car entrance



Car and shaft sizes with two opposite entrances



Car and shaft sizes with two adjacent entrances



Accessible for wheelchair/with accompanying person as per EN81-41, L13 Italy; starting from car size 1000 x 1250 mm with CDO >= 800 mm min. and with telescopic automatic doors, also according to EN81-70



Accessible for wheelchair, only according to L13 Italy

With automatic telescopic doors:

- Headroom height min. 2500/2700 mm depending on the type of door
- Not fire rated doors: cut vertical dimension 2250/2350 mm with door opening height 2000/2100 mm
- Fire rated doors E 120: height of door cut 2210/2310 mm with door opening height 2000/2100 mm

With swing doors with/without folding doors:

- Headroom height min. 2500 mm
- Not fire rated doors: height of door cut 2120 mm with door opening height 2000 mm

All sizes in mm

Pit depth min. 150 mm

Central opening two - panel door on request.

Other car or shaft sizes on request

Distance between guides = 700 mm; 500 mm with CD = 800 mm

CW = Car width

CD = Car depth

CDO = Clear door opening

SW = Shaft width

SD = Shaft depth

FW = Frame width

FW = 280 mm for automatic telescopic doors

FW = 290 mm for swing doors with/without folding doors

Non-contractual information subject to conditions of use. Shaft dimensions refer to orthogonal spaces. For feasibility of any solution, not present in the table, please contact GMV Sales Office.



GMV INDIA PRIVATE LIMITED

Office:

201, 2nd Floor – LEONARDO OFFICE,

Building type A,

Hiranandani Estate,

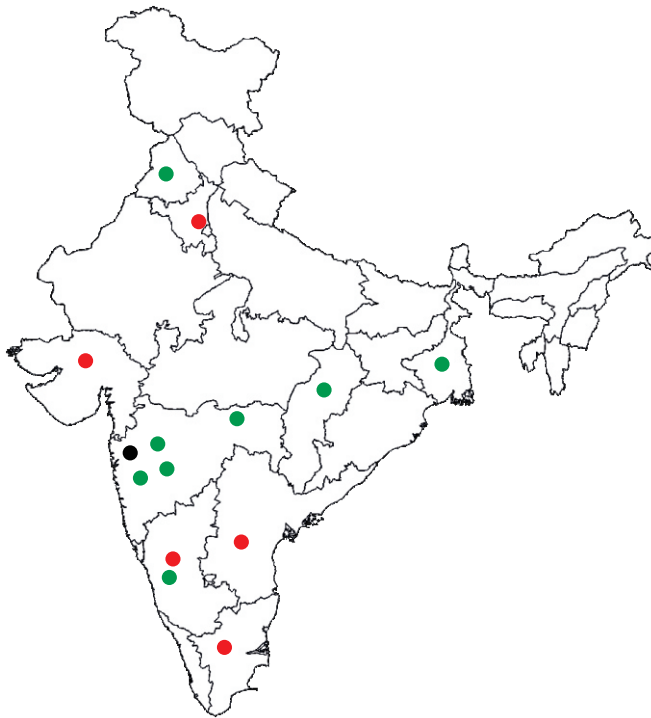
Ghodbunder Road,

Thane (W) – 400607

Tel.: +91 22 41005236

Tel.: +91 7506336730

e-mail: info@gmv-india.co.in



For More details

Please Log On to.
www.gmv-india.co.in

GMV India's Network

- Head Office in Mumbai
- Glocal Partners
- Distributors

GMV worldwide



GMV's quality systems are certified. Furthermore, we have introduced the "6 sigma" concept as a total quality philosophy, up to the complete testing of the products.

This document is for information purposes only. We reserve the right to modify at any time the reported specifications, without notice. We recommend that you view actual samples of car finishes, as there may be slight differences to those illustrated in the brochure.